

Peckham Community Council

Welcome singers will perform before the start of the meeting at 6.20pm

Monday 31 October 2011

6.30 pm

Oliver Goldsmith Primary School, 83 Peckham Road, London, SE5 8UH

Membership

Councillor Cleo Soanes (Chair)
Councillor Michael Situ (Vice-Chair)
Councillor Chris Brown
Councillor Barrie Hargrove
Councillor Richard Livingstone
Councillor Catherine McDonald

Members of the committee are summoned to attend this meeting

Annie Shepperd

Chief Executive

Date: Friday 21 October 2011



Order of Business

- | Item No. | Title |
|----------|--|
| 1. | INTRODUCTION AND WELCOME |
| 2. | APOLOGIES |
| 3. | DISCLOSURE OF MEMBERS' INTERESTS AND DISPENSATIONS |

Members are asked to declare any interest or dispensation and the nature of that interest or dispensation which they may have in any of the items under consideration at this meeting.

Item No.	Title	Time
4.	ITEMS OF BUSINESS THAT THE CHAIR DEEMS URGENT	
	The chair to advise whether they have agreed to any item of urgent business being admitted to the agenda.	
5.	MINUTES (Pages 4 - 10)	
	To confirm as a correct record the minutes of the meeting held on 21 September 2011.	
6.	DEPUTATIONS/PETITIONS	
	6.1. PETITION (Pages 11 - 13)	6.40 pm
	To receive a petition "Stop the current market stalls on Peckham Square"	
7.	COMMUNITY ANNOUNCEMENTS	7.00 pm
	<ul style="list-style-type: none"> • Revealed certificate presentation. • Equalities and human rights consultation • Home Improvement Agency 	
	MAIN BUSINESS	
8.	FUTURE PECKHAM - A HEALTHIER PECKHAM	
	8.1. LOCAL BOWEL CANCER SCREENING PROGRAMME	7.10 pm
	Jo Zhou, Health Promotion Specialist – presentation on local bowel cancer screening.	
	8.2. BOWEL CANCER UK	7.30 pm
	Gail Curry, Health Promotion and Outreach Manager – presentation on the work of Bowel Cancer UK.	
	8.3. BREAST CANCER SCREENING	7.30 pm
	Abi Ajose-Adeogun, Better Day Breast Cancer – presentation about breast cancer screening.	

Item No.	Title	Time
8.4. WRINKLIES DIRECT	Mark Saunders, presentation on issues such as age discrimination and ways in which older people can enhance their chances of getting back into work.	7.40 pm
8.5. HOME IMPROVEMENT AGENCY	Information on financial and practical assistance available to vulnerable elderly homeowners.	7.50 pm
9. CLEANER GREENER SAFER	Michelle Normanly, Senior Project Manager	8.00 pm
10. CAR CLUB PROJECT	Tim Walker, Senior Engineer Presentation about the councils existing car club scheme and ambitions for the next few years.	8.15 pm
BREAK - 8.30 PM		
An opportunity for residents to chat to Councillors and Officers.		
Stalls including:		
<ul style="list-style-type: none"> • How to keep warm in winter • Southwark carers • Dementia care • Southwark Pensioners Centre • Housing Renewal & Older Person Services • BP check session 		
11. PUBLIC QUESTION TIME (Page 14)	This is an opportunity for public questions to be addressed to the chair. Residents or persons working in the borough may ask questions on any matter in relation to which the council has powers or duties. Responses may be supplied in writing following the meeting.	8.45 pm

Item No.	Title	Time
12.	HIGHWAYS CAPITAL INVESTMENT 2012/13 (Pages 15 - 17)	8.50 pm
	Execution Function	
	To consider the works to be funded as set out in the report.	
13.	LOCAL PARKING AMENDMENTS AND CAR CLUB EXPANSION (Pages 18 - 26)	8.55 pm
	Executive Function	
	To consider the local car parking amendments and car club expansion as set out in the report.	
14.	CLEANER, GREENER, SAFER FUNDING REALLOCATION	9.00 pm
	Executive Function	
	<i>Report to follow</i>	
15.	COMMUNITY COUNCIL FUND REALLOCATION (Pages 27 - 36)	9.05 pm
	Executive Function	
	To consider the reallocation of community council funding as set out in the report.	
16.	PLANNING ENFORCEMENT QUARTERLY REPORT (Pages 37 - 49)	9.10 pm
	Councillors to note the report.	

Date: Friday 21 October 2011

Peckham Community Council

Language Needs

If you would like information on the Community Councils translated into your language please telephone 020 7525 7187 or visit the officers at 160 Tooley Street, London SE1 2TZ

Spanish:

Necesidades de Idioma

Si usted desea información sobre los Municipios de la Comunidad traducida a su idioma por favor llame al 020 7525 7187 o visite a los oficiales de 160 Tooley Street, Londres SE1 2TZ

Somali:

U-Baahnaanshaha Luqadda

Haddii aad u baahan tahay macluumaadka ku saabsan Guddiyada Beelaha oo lagu tarjumay luqaddaada fadlan soo wac khadka taleefoonka 020 7525 7187 ama booqasho ugu tag hawlwadeennada ku sugan 160 Tooley Street, London SE1 2TZ

French:

Besoins de Langue

Si vous désirez obtenir des renseignements sur les Community Councils traduits dans votre langue, veuillez appeler le 020 7525 7187 ou allez voir nos agents à 160 Tooley Street, London SE1 2TZ

Yoruba:

Awon Kosemani Fun Ede

Bi o ba ba nfe àlàyé kíkún l'ori awon Ìgbìmò Àwùjo ti a se ayipada si ede abíníbí re, jọwọ tẹ wa l'aago si ori nomba yi i : 020 7525 7187 tabi ki o yo ju si awon òṣìṣé ni ojúlé 160 Tooley Street , London SE1 2TZ .

Igbo:

Asusu

I choo imata gbasara Council na asusu gi ikpoo ha n'okara igwe 020 7525 7187 ma obu igaa hu ndi oru ha na 160 Tooley Street, London SE1 2TZ

Krio:

Na oose language you want

If you lek for sabi all tin but Community Council na you yone language, do ya telephone 020 7525 7187 or you kin go talk to dee officesr dem na 160 Tooley Treet, London SE1 2TZ.

Creole:

Language Needs

If unu lekh news boht unu Community Councils nah yu language, duyah fone 020 7525 7187 or cahm toh we officers nah 160 Tooley Street, London SE1 2TZ

Twi:

Kasaa ohohia,

se wopese wo hu nsem fa Community Councils ho a, sesa saakasa yie ko wo kuro kasa mu. wo be tumi afre saa ahoma torofo yie 020 7525 7187 anase ko sra inpanyinfo wo 160 Tooley Street, London SE1 2Tz.

INFORMATION FOR MEMBERS OF THE PUBLIC

CONTACT: Alexa Coates, Principal Constitutional Officer, Tel: 020 7525 7385 or email: alexa.coates@southwark.gov.uk
Website: www.southwark.gov.uk

ACCESS TO INFORMATION

On request, agendas and reports will be supplied to members of the public, except if they contain confidential or exempted information.

ACCESSIBLE MEETINGS

The council is committed to making its meetings accessible. For further details on building access, translation and interpreting services, the provision of signers and other access requirements, please contact the Constitutional Officer.

Disabled members of the public, who wish to attend community council meetings and require transport assistance in order to attend, are requested to contact the Constitutional Officer. The Constitutional Officer will try to arrange transport to and from the meeting. There will be no charge to the person requiring transport. Please note that it is necessary to contact us as far in advance as possible, and at least three working days before the meeting.

BABYSITTING/CARERS' ALLOWANCES

If you are a resident of the borough and have paid someone to look after your children or an elderly or disabled dependant, so that you can attend this meeting, you may claim an allowance from the council. Please collect a claim form from the Constitutional Officer at the meeting.

DEPUTATIONS

Deputations provide the opportunity for a group of people who are resident or working in the borough to make a formal representation of their views at the meeting. Deputations have to be regarding an issue within the direct responsibility of the Council. For further information on deputations, please contact the Constitutional Officer.

**For a large print copy of this pack,
please telephone 020 7525 7420.**



PECKHAM COMMUNITY COUNCIL

MINUTES of the Peckham Community Council held on Wednesday 21 September 2011 at 7.00 pm at Harris Academy at Peckham, 112 Peckham Road, London SE15 5DZ

PRESENT: Councillor Cleo Soanes (Chair)
Councillor Michael Situ (Vice-Chair)
Councillor Chris Brown
Councillor Barrie Hargrove
Councillor Richard Livingstone
Councillor Catherine McDonald

OTHER MEMBERS PRESENT: Councillor Veronica Ward, Cabinet Member for Culture, Leisure Sport and the Olympics

OFFICER SUPPORT: Darryl Telles, Neighbourhoods Manager
Roger Young, Area Renewal Manager
Pam Usher, Library Service Manager
Alison Squires, Planning Policy Team Leader
Marian Farrugia, Neighbourhood Co-ordinator Nunhead and Peckham
Nadine James, Community Council Development Officer
Alexa Coates, Principal Constitutional Officer

1. INTRODUCTION AND WELCOME

The chair welcomed councillors, members of the public and officers to the meeting and explained that the theme of the meeting was future Peckham. The chair thanked the staff at the Peckham Harris Academy for allowing the community council to use the venue.

2. APOLOGIES

Apologies for lateness were received from Councillor Michael Situ.

3. DISCLOSURE OF MEMBERS' INTERESTS AND DISPENSATIONS

There were none.

4. ITEMS OF BUSINESS THAT THE CHAIR DEEMS URGENT

There were none.

5. MINUTES

RESOLVED:

That the minutes of the meeting held on 12 July 2011 be agreed as a correct record and signed by the chair.

6. DEPUTATIONS/PETITIONS (IF ANY)

There were none.

7. COMMUNITY ANNOUNCEMENTS

The chair invited the following community announcements:

Plastic Free Peckham

Lesley Wetheimer explained that the group had received Cleaner, Greener Safer funding from Peckham and Nunhead and Peckham Rye community councils to conduct some research into why people use plastic bags and what would encourage them to stop. The group produced some shopping bags with the slogan 'plastic up' conceived by a local school child. Lesley invited attendees to take a bag with them.

Cemeteries Consultation

Deborah McKenzie, Parks Service Development Officer, explained that the council was currently consulting on options for burial space in the borough. The only new plots available were in Camberwell Old Cemetery. The council had measures to deal with burials in the short term but long term options needed to be considered. Deborah encouraged residents to complete the consultation questionnaire and to attend a consultation event on Saturday 2 September between 1-4pm at Honor Oak recreation ground.

Veolia – changes to recycling services

Ian McGeogh explained that following a pilot scheme changes to recycling services would be rolled out across the borough. He advised people to keep an eye out for leaflets explaining the changes which included details on collection schedules. The changes would only effect curbside collection and not those who used clear bags or communal bins. One change implemented across the borough was that TetraPacs could now be collected from recycling bins.

Peckham Shed performance

Peckham Shed gave a performance to the community council. After which they explained that they were a theatre group who provided theatre workshops for young people aged between 5-17. The group had set up the peace wall in Peckham following the disturbances.

The chair thanked Peckham Shed for their performance and invited attendees to record their comments and pledges for the community conversations.

8. THEME - FUTURE PECKHAM

The chair introduced the theme of the meeting, Future Peckham, which would focus on some of the work by the council to improve the area for people who live and work in Peckham.

8.1 TRANSPORT SCHEMES

Jack Ricketts, Transport Planner, updated the meeting on the transport delivery programme for 2012/13 following an allocation of funding from TfL. The complementary measures associated with the Cycle Super Highway route 5 would affect the Peckham area 2012/13, for which £120,000 had been allocated to improve permeability for cyclists. Possible measures include public realm improvements, dropped kerbs and cycle contraflows.

Jack also outlined some schemes across all the community council areas including, cycling training and travel awareness campaigns. Jack concluded by offering to chat with attendees in the break if they were interested in finding out more about the transport schemes.

8.2 LIBRARY CONSULTATION

Councillor Veronica Ward, cabinet member for culture, leisure sport and the Olympics and Pam Usher, Library Service Manager reported on the results of the library consultation.

Cllr Ward explained that the council had to look at making budget cuts across all services but the libraries were very important and that the library in Peckham feels connected to the local community. Some of the ideas gathered from the survey would be taken forward to cabinet when they take a final decision.

Pam Usher outlined some of the key headlines from the consultation. 9% of respondents didn't have a Southwark library card but used the libraries for other activities to borrowing books. Peckham library was a key library for young people for example as a place to study. Overall 46% of people agreed with the principle to use more volunteers and 31% preferred to keep the same opening times even if it meant fewer libraries.

In terms of preferred options for savings the following results were gathered:

- 41% said reduce opening hours
- 36% said reduce the number of smaller libraries
- 33% said reduce the budget for ICT

- 14% said reduce the number of staff

In Peckham the following options were preferred:

- 33% said reduce the opening hours
- 26% said reduce the budget for IT
- 49% said reduce the number of smaller libraries
- 17% said reduce the stock

Pam informed the meeting that the results of the survey and recommendations would be made to the cabinet at their meeting on 18 October 2011.

The chair thanked Cllr Ward and officers for their work on the consultation.

8.3 HOUSING AND AREA RENEWAL

Roger Young, Area Renewal Manager, gave a brief overview of the services and funds available as part of the Queens Road renewal area including:

- Climate energy – free or reduced rate loft installation was available to residents
- Group repair scheme
- Empty property – the council could help bring properties back in to use
- Handy person services
- Home improvement agency – could help older residents or people with disabilities

Roger explained that funds were available to improve the local area and encouraged residents to visit the stalls to find out more and to tell neighbours and other residents about the services available.

8.4 PECKHAM AND NUNHEAD AREA ACTION PLAN

Alison Squires, planning policy team leader explained that the area action plan was a 15 year plan which sought to build on the existing improvements in the Peckham area. The policy set in the plan would have to be followed by developers in the future. She advised that the plan was in draft form and the council was heading towards a preferred option. Officers had attended the previous Peckham community council meeting on 12 July 2011 to get specific views on: housing employment and retail. The consultation period on the current draft would end on 30 September 2011.

The document was available on the website and Alison encouraged people to comment through the formal consultation process, officers could be contacted via phone or email to help people have their say.

It was expected that a further draft would be prepared in early 2012 when officers would come back to the community council and the final consultation stage would be in October 2012.

8.5 AFFORDABLE HOUSING SUPPLEMENTARY PLANNING DOCUMENT

Alison also explained that the council was currently consulting on an affordable housing

supplementary planning document, the document would set the policy for developments in the future in relation to affordable housing.

Some of the key questions for Peckham included: should a policy required a minimum level of private as well as affordable housing be included and should there be an policy requiring more private family homes in the area. Alison explained that the council sought views on the document which included draft policies relating to these and other housing issues in the borough.

9. DEMOCRACY COMMISSION

The chair invited Councillor Richard Livingstone, Cabinet Member for Finance, Resources and Community Safety, to explain some of the budget context to the work of the Democracy Commission, which as part of phase 2 was focusing on the role and purpose of community councils. Cllr Livingstone explained that Southwark received approximately three quarters of its funding from central government and as a result of government cuts had to find £34 million of savings in 2011/12. As a result the council had to make savings across departments and this was an opportunity to review how community councils worked as well as identifying savings.

Darryl Telles, Neighbourhoods Manager, gave some more specific background into the budget available to community councils and explained the consultation process for the Democracy Commission phase 2 which had included: focus groups, questionnaires, and staff workshops.

Darryl took questions and comments from the floor relating to: how the membership of the focus groups had been selected, reducing the level of meetings, cutting food provided to meeting attendees and just providing tea and coffee, the format of meetings and the lack of participatory discussion and the possibilities of merging community council areas.

Darryl explained that a representative sample of meeting attendees had been selected to form the focus groups.

The meeting took part in a voting exercise on the options for community councils, the results of which are attached as an appendix to the minutes.

10. PUBLIC QUESTION TIME

The chair took questions from the floor. An issue was raised relating to markets on Peckham Square.

Cllr Barrie Hargrove, Cabinet Member for Transport, Environment and Recycling explained that the decision had been taken by the markets team of the council to allow stalls on the square during the week. Cllr Hargrove asked attendees if they objected on the principle of the stalls or the specific nature of the stalls. Councillor Michael Situ, suggested taking a vote to establish whether people were opposed to stalls on Peckham Square or not. 15 attendees were against any stalls and 0 were in favour. However, some attendees did express a view that the Sunday market was a positive development in the area.

Cllr Hargrove said he would discuss the issue with officers in his role as cabinet member and investigate the implications of terminating existing agreements and exploring alternative opportunities for traders.

A comment was also made relating to the quality of jobcentre services in Southwark compared to other London Boroughs. A suggestion was made that Peckham jobcentre did not provide a comparable service to other areas for young people. Councillor Catherine McDonald, Cabinet Member for Children's Services, outlined some of the measures the council was implementing to help young people with education and job opportunities including a youth fund over approximately £3million over three years which would assist young people to stay in education or find a job.

Councillors agreed to write to Councillor Fiona Colley, Cabinet Member for Regeneration and Corporate Strategy, asking her to look into this issue and provide a response to the community council.

An issue was raised about cycle pathways through Peckham square, as a group of people had been noticed asking cyclists to slow down.

Cllr Hargrove explained that Southwark cyclists were the group and they were encouraging other cyclists to slow down on the route and think about pedestrians. He explained that it was an important route for pedestrians and that it was difficult to bring in physical measures to slow cyclists effectively and so it was thought that a publicity campaign was the best solution.

A question was raised relating to housing repairs and whether the work is supervised.

Cllr Livingstone explained that the housing repairs service had been subject of an overview and scrutiny review. As a result himself and Councillor Ian Wingfield, Deputy Leader of the Council and Cabinet Member for Housing Management, would look into customer service and how the call centre was working and how it could improve.

In addition Cllr Situ who is a member of the Housing and Community Safety Scrutiny Sub-Committee added that the scrutiny report had made some specific recommendations about how the housing repairs service could be improved including: penalising contactors when they fail to meet their contractual commitments and better monitoring of contractors sent to complete works. He hoped that in the next year or so residents would begin to see significant improvements in the service.

ACTIONS

Cllr Hargrove to look into stalls on Peckham Square and report back to the community council

Councillors to write to Cllr Fiona Colley, Cabinet Member for Regeneration and Corporate Strategy, asking her to look into the Peckham job centre issue.

11. LOCAL PARKING AMENDMENTS

Executive Function

RESOLVED

That the following local parking amendments, detailed in the appendices in the report, be approved for implementation subject to the outcome of any necessary statutory procedures:

- Gervase Street – relocation of original disabled bay
- Asylum Road – installation of at any time waiting restrictions

12. EXCLUSION OF THE PUBLIC AND PRESS**RESOLVED:**

That the public be excluded from the meeting for the following items of business on the grounds that they involve the likely disclosure of exempt information as defined in paragraphs 1 and 2, Access to Information Procedure rules of the Constitution.

13. SCHOOL GOVERNOR NOMINATIONS

Executive Function

RESOLVED

That Ms Daniela Miscichowski be appointed as school governor for Nell Gwynn Nursery School

The meeting ended at 9.30 pm.

CHAIR:

DATED:

Item No. 6.1	Classification: Open	Date: 31 October 2011	Meeting Name: Peckham Community Council
Report title:		Petition – Stop the current market stalls trading on Peckham Square	
Ward(s) or groups affected:		Peckham	
From:		Strategic Director of Communities, Law & Governance	

RECOMMENDATION

1. That the Peckham Community Council considers a petition in respect of market stalls on Peckham Square.

BACKGROUND INFORMATION

2. A petition containing 250 signatures or more maybe presented to the community council. A petition can be submitted by a person of any age who lives, works or studies in Southwark. Petitions must relate to matters which the council has powers or duties or which affects Southwark.
3. At the meeting, the spokesperson for the petition will be invited to speak up to five minutes on the subject matter. The community council will debate the petition for a period of up to 15 minutes and may decide how to respond to the petition at the meeting.
4. Any relevant resource or community impact issues will be contained in the comments of the strategic director.

KEY ISSUES FOR CONSIDERATION

5. A petition containing 250 signatures has been received in respect of market stalls on Peckham Square. The petition states:

“Stop the current market stalls trading on Peckham Square: Monday – Saturday.

The space became available when the Surrey Canal Basin was infilled. It is a popular successful space, at the meeting point of the Surrey Canal Walk and Peckham High Street. Peckham Square is the heart and soul of the newly regenerated Peckham. There’s the Pulse Health Living Centre and an award winning library, designed by Will Alsop and Jan Stomer in 1998 and more recently the new Peckham Square Art Gallery which goes to show how much Peckham is changing.

Therefore we object to the market stalls that have recently started trading on Peckham Square Monday-Saturday: currently selling cheap clothes and handbags in an already heavily saturated market of the same goods in Peckham. Moreover, at present, the stalls obstruct a clear view and access of

the library and leisure centre from Peckham High Street. We, the residents with the current market stalls to cease trading on Peckham Square Monday-Saturday and thus return the square to its original free open space for all to enjoy. Therefore, we would like Southwark Council to withdraw the market license issued to trade on Peckham Square, London, SE15 5RS.”

6. The community council should decide how to respond to the petition at this meeting. The community council has no decision making powers in relation to this issue but could refer the issue to officers to investigate further.

SUPPLEMENTARY ADVICE FROM OTHER OFFICERS

Comments of the Strategic Director of Environment and Leisure

7. Peckham Square is currently licenced for street trading. There is a successful Farmers Market operating on Sundays and recently there has been three to four temporary licences granted Monday to Saturday.
8. Although the current stallholders are doing a steady trade, it is clear that the location is not suitable for long term trading of these types of goods. Therefore, a decision has been taken to terminate these temporary licenced pitches from Saturday 29 October 2011, and to place these traders on other available pitch locations around the Peckham area.
9. This will allow these traders to continue their trading in the area, and will allow their customers to continue to purchase from these stallholders.
10. We would like to explore market trading opportunities on Peckham Square. But first we will need to fully understand local needs and aspirations. We therefore hope to consult with local residents, businesses and councillors on the type of market arrangements that might be more suitable on the square. Following which we would report back to a future community council meeting.

BACKGROUND DOCUMENTS

Background Papers	Held At	Contact
Petition - Stop the current market stalls trading on Peckham Square	160 Tooley Street, London SE1 2QH	Alexa Coates, Principal Constitutional Officer, Alexa.coates@southwark.gov.uk 020 7525 7385

AUDIT TRAIL

Lead Officer	Ian Millichap, Constitutional Manager	
Report Author	Alexa Coates, Principal Constitutional Officer	
Version	Final	
Dated	20 October 2011	
Key Decision?	No	
CONSULTATION WITH OTHER OFFICERS / DIRECTORATES / CABINET MEMBER		
Officer Title	Comments Sought	Comments included
Strategic Director of Communities, Law & Governance	No	No
Finance Director	No	No
Strategic Director of Environment and Leisure	Yes	Yes
Date final report sent to Community Council Team		20 October 2011

Agenda Item 11



COMMUNITY COUNCILS
A voice for your community

**Peckham Community Council****Public Question form**

Your name:

Your mailing address:

What is your question or comment?

Please give this to Alexa Coates, Principal Constitutional Officer or Nadine James, Community Council Development Officer.

Item No. 12	Classification: Open	Date: 31 October 2011	Meeting Name: Peckham Community Council
Report title:		Community Council Highways Capital Investment 2012/13	
Ward(s) or groups affected:		All in the Community Council areas	
From:		Gill Davies, Director Environment and Leisure	

RECOMMENDATION

1. To agree the works to be funded from the proposed schemes in the Peckham Community Council area as set out in appendix A or to agree alternative schemes subject to officer investigation and feasibility.

BACKGROUND INFORMATION

2. The declining quality of public highway coupled with extreme weather events has led to further deterioration in recent years – with some non principal, unclassified roads being particularly affected. Given the nature of these roads and the lower level of traffic flows it is unlikely that such locations will feature in any major resurfacing programme. Without the necessary capital allocation to attend to such locations, complaints of poor road surfaces can only be dealt with through the reactive maintenance programme.
3. The Council's non-principal road investment programme prioritises works on non-principal roads on a borough-wide basis and this investment forms the largest part of the annual investment programme.
4. However, as part of the approved Highways capital investment programme for 2012/13 a proportion has been devolved to each community council area. Each Community Council will receive £100,000 for highways surface improvements (carriageway or footway) of their choice. These can be spent on any non-principal road on the area. Any under spends from previous years can also be allocated, up to the available funding outlined in Appendix 1.

KEY ISSUES FOR CONSIDERATION

Officers (Engineers) Selections

5. As an aid to the selection process officers have provided a range of required works and indicative costs for their implementation. These exclude works already programmed as part of the borough-wide priority programme. These are shown in Appendix 1. Appendix 1 also includes detail of under spends remaining from previous years.

Community Council Selections

7. This money can be spent on any asset renewal or replacement project selected by the Community Council with the caveats that it cannot be spent on traffic safety or parking schemes, non functional or decorative installations and / or non-essential works. In addition to the resurfacing selections provided it, the money (or part thereof) could be spent on minor patching and pothole repairs should a Community Council wish to do so.

Delivery

8. Once the Community Council has made their selections by the method of their choice they will be designed and delivered as soon as possible in 2012/13. Any under spends or projected overspends will be reported back to Community Council for resolution or reallocation.

Community Impact Statement

9. There are no specific community impact issues arising from the recommendations.

BACKGROUND DOCUMENTS

Background Papers	Held At	Contact
Highways Capital, Investment Programme Decision 18 August 2011	160 Tooley Street PO Box 64529 Southwark Council London SE1P 5LX	Matthew Hill 020 7525 3541

APPENDICES

No.	Title
Appendix 1	Candidate Schemes

AUDIT TRAIL

Lead Officer	Gill Davies, Director Environment and Leisure	
Report Author	Matthew Hill, Public Realm Programme Manager	
Version	Final	
Dated	20 October 2011	
Key Decision?	No	
CONSULTATION WITH OTHER OFFICERS / DIRECTORATES		
Officer Title	Comments Sought	Comments included
Strategic Director of Communities, Law & Governance	No	No
Finance Director	No	No
Date final report sent to Constitutional Team	20 October 2011	

APPENDIX 1

Devolved Community Council Funded Schemes

Community Council : Peckham

Date : 10 October 2011

	Funding
Under spend from previous years	£7,460.00
Allocation for FY 2012/13	£100,000.00
Total available for 2012/13	£107,460.00

Officer Recommendations – 2012/13

Candidate Road	Ward	Identified defects	Suggested treatment	Estimated Cost
Sumner Rd	Peckham	Carriageway : Commercial Way to Daniel Gardens. Significant trench settlement; longitudinal cracking; local subsidence; localized deformations.	Carriageway : Plane off and resurface (40mm); some full / partial depth reconstruction may be required ; reinstatement of 7 sets of speed cushions and road marking	£74,250
Green Hundred Rd	Livesey	Carriageway : Subsiding trench reinstatements ; local depressions; repeated patching in various states of degradation; longitudinal and transverse cracking; Footway: Uneven and untidy due to previous patching ; tree root distortion ; irregular tree pits	Carriageway : Plane off and resurface 40mm plus some partial / full depth reconstruction; reinstatement of traffic calming measures and road marking. Footway: Repave top Council Standard and reinstate cross overs and road markings	£26,000 £30,000

Notes –

- All road works for 2011/12 have been completed.

Item No. 13	Classification: Open	Date: 31 October 2011	Meeting Name: Peckham Community Council
Report title:		Local parking amendments and Car Club expansion	
Ward(s) or groups affected:		All wards within Peckham Community Council	
From:		Senior Engineer, Public Realm Projects (Parking Design)	

RECOMMENDATIONS

1. That the following local parking amendment, detailed in the appendices to this report, be approved for implementation subject to the outcome of any necessary statutory procedures:
 - Meeting House Lane - Reduce the length of existing “at any time” waiting restrictions (double yellow lines) at the junctions with Springall Street/Montpelier Road and Naylor Road/Carlton Grove
2. The shortlist for potential future car club locations (Table 1) be approved
3. That three of the shortlisted locations for implementation during 2012/13 be prioritised (recommended: Sumner Road, Geldart Road and Peckham Grove)
4. That prior to implementation, each location is subject to local (informal) consultation and the completion of any necessary statutory procedures

BACKGROUND INFORMATION

5. This report presents proposals for a number of local parking amendment schemes, which are matters reserved to Community Council for decision under Part 3H of the constitution.
6. The origins and reasons for the proposals are discussed in the main body of the report.

KEY ISSUES FOR CONSIDERATION

Meeting House Lane 1011Q4027

7. The network development team was asked by Peckham Community Council to monitor and investigate the possibility of reducing the “at any time” waiting restrictions (double yellow lines) on Meeting House Lane at the junctions with Naylor Road/Carlton Grove and Springall Street/Montpelier Road.
8. These restrictions were introduced by the public realm projects team as part of an improvement scheme for Meeting House Lane commissioned by the Housing Renewal Team.
9. The team carried out a consultation between 8th May and the 22nd May 2009 which showed 84% of respondents in favour of the improvement scheme.

10. However once the restrictions were installed residents raised concern that the yellow lines were too long and should be reduced to provide more parking availability.
11. Parking Design officers have evaluated the two junctions and are of the opinion that the double yellow lines could be reduced to in length only to extend to the limit of the raised table (currently they extend beyond that point on some junction arms).
12. Under the Traffic Management Act, 2004, it became an offence to park on a raised table (*parked on part of the carriageway raised to meet the level of a footway, cycle track or verge*). In view of this, it would be misleading to reduce the length of the yellow lines any further than the extent of the raised junction tables.
13. It is recommended, as shown in Appendix 1, that the waiting restrictions (double yellow lines) are modified in length so that all arms of both junctions match the extent limits of the raised entry tables.

Car Club background

14. The council's Transport Plan sets out our policy to ensure that there is a car club vehicle within five to ten minutes walk of each of household by 2014.
15. Southwark commenced the introduction of car club bays in March 2010. Since then over 100 on-street car club bays have been installed providing convenient neighborhood cars to over 8,500 car club members in the borough. Figure 1 identifies all car club sites in Southwark and neighboring boroughs.
16. There are 3 existing car club bays in this community council area
17. Car clubs provide mutual benefits to residents, businesses and to the council.
18. To residents and businesses they provide the convenience of being able to use a clean, modern and reliable vehicle for those trips you cannot do by using public transport, cycling or walking. They provide a convenient alternative to using a privately owned vehicle because car club members only pay for what they use and therefore do not have to worry about tax, insurance, parking permits, servicing or repairs. There are none of the hassles of owning and maintaining a car.
19. To the council they help improve traffic and parking conditions, reduce carbon emissions and improve air quality. Car clubs achieve this through the use of a

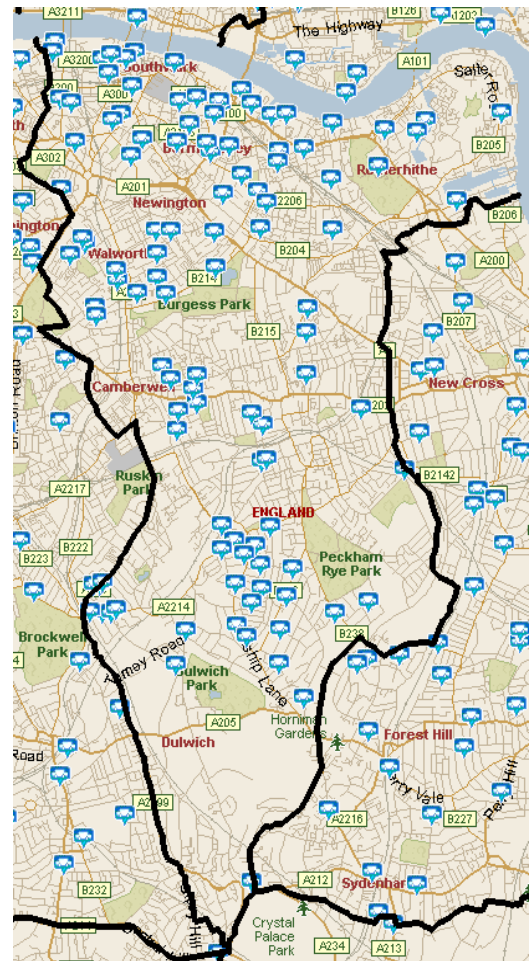


Figure 1 - Existing car club locations

clean, efficient vehicle fleet and the fact¹ that each car club car replaces around 24 private cars (through members choosing to sell their own private car or deferring purchase of a new one). This, in turn, benefits residents.

20. An extensive range of vehicles are available to Southwark members, including small cars, medium cars, premium cars and vans.
21. Cars are reserved online or by phone, and can be collected and returned 24/7 using a high-tech smartcard. You can use a car for as little as 30 minutes or as long as six months.
22. Each car has its own dedicated bay where you will pick-up and return your vehicle. They are placed in areas where they are easily accessible for residents and businesses.

Car Club expansion

23. Southwark has a contractual partnership with Zipcar (after Streetcar and Zipcar recently merged). Zipcar, a multinational car club company, populate the bays with their vehicles and manage the membership and operation of the club. Southwark provide dedicated car club bays on the public highway for each vehicle to park.
24. Officers have been working closely with Zipcar to identify potential locations for new car club bays. Table 1 shortlists locations that are suitable (from a traffic and parking perspective) for a new car club bay in this community council area. The locations are shown on a map in Appendix 2.
25. Officers have identified more potential locations than we can install during 2011/12 and 12/13 (for market reasons) so the shortlist must be prioritised. Remaining sites on the shortlist will be delivered as growth of the car club further increases.
26. The prioritised locations have been identified jointly between officers and Zipcar and are strongly recommended for their potential as a successful site.
27. The locations are expected to be successful based upon projected vehicle use, usage of existing nearby bays and demand analysis (Appendix 3). Delivery of these bays will also help achieve the stated policy objective.

TABLE 1		RECOMMENDED
SITE ID	STREET	PRIORITY
S-162	GELDART ROAD	2012/13
S-190	PECKHAM GROVE	2012/13
S-123	SUMNER ROAD	2012/13
S-154	BLAKES ROAD	2013/14 onwards (or before, if demand increases)
S-173	GLENGALL ROAD	2013/14 onwards (or before, if demand increases)

28. A similar short listing process is being conducted with each community council and

¹ Car Plus, 2011, the national charity promoting responsible car use. carplus.org.uk/car-clubs/benefits/

a full list of bays can be found in Appendix 4.

29. Local, informal, consultation will be carried out prior to implementation; this will include information about how car clubs work and their benefits to the neighbourhood.

POLICY IMPLICATIONS

30. The recommendations contained within this report are consistent with the policies of the council's Transport Plan and the Parking and Enforcement Plan, particularly:

- Policy 1.1 – pursue overall traffic reduction
- Policy 1.5 – ensure that there is a car club bay within five to ten minutes walk of each household in the borough by 2014
- Policy 2.3 – promote and encourage sustainable travel choices in the borough
- Policy 4.2 – create places that people can enjoy
- Policy 8.1 – seek to reduce overall levels of private motor vehicle traffic on our streets

COMMUNITY IMPACT STATEMENT

31. The policies within the Transport Plan and Parking and Enforcement Plan are upheld within this report have been subject to an Equality Impact Assessment (EqIA).

32. The proposals will support the council's equalities and human rights policies and will promote social inclusion by:

- Providing increased availability of access to a car club, as a shared local resource with economic and environmental benefits to the community.

RESOURCE IMPLICATIONS

33. All costs arising from implementing the proposals, as set out in the report, will be fully contained within the existing local parking amendment budget and funding from Transport for London specifically for car club expansion.

CONSULTATION

34. No informal consultation has been carried out.

35. Should the community council approve the item, statutory consultation will take place as part of the making of the traffic management order. A proposal notice will be erected in proximity to the site location and a press notice will be published in the Southwark News and London Gazette. If there are objections a further report will be re-submitted to the community council for determination.

36. The road network and parking manager has been consulted on the proposals and has no objections.

37. No consultation or comment has been sought from the borough solicitor & secretary or the chief finance officer

BACKGROUND DOCUMENTS

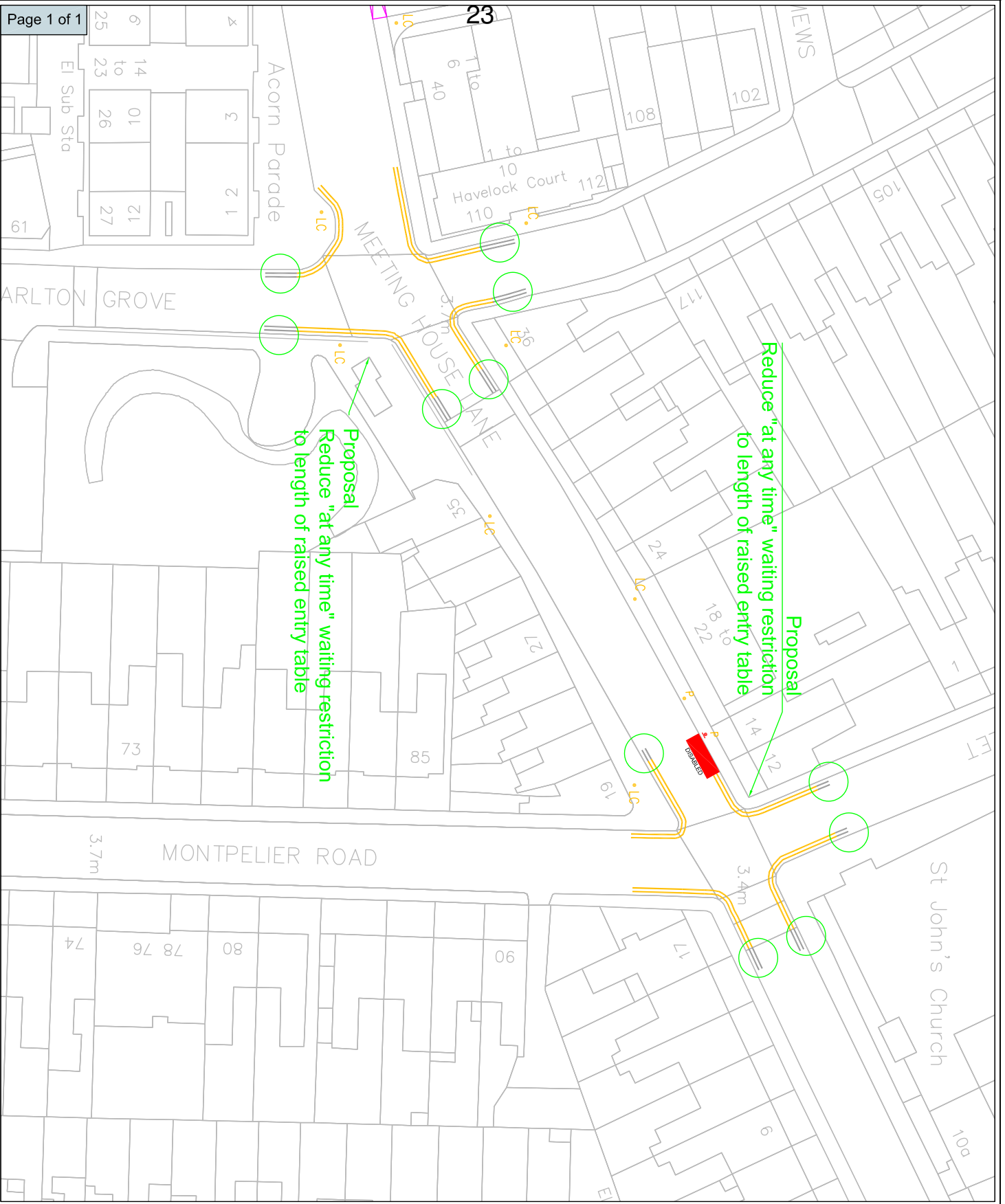
Background Papers	Held At	Contact
Transport Plan Parking and Enforcement Plan	Parking Design Public Realm 160 Tooley Street	Tim Walker 020 7525 2021

APPENDICES

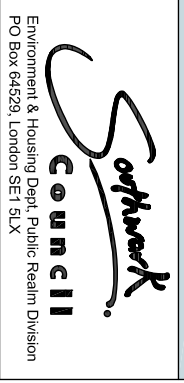
No.	Title
Appendix 1	Meeting House Lane - Proposed reduction in length of "at any time" waiting restrictions
Appendix 2	Map of shortlisted car club locations for community council
Appendix 3	Map of car club demand
Appendix 4	Borough-wide shortlist of car club locations

AUDIT TRAIL



Lead Officer	Tim Walker, Senior Engineer	
Report Author	Michael Herd, Transport and Projects Officer	
Version	Final	
Dated	20 October 2011	
Key Decision?	No	
CONSULTATION WITH OTHER OFFICERS / DIRECTORATES / CABINET MEMBER		
Officer Title	Comments Sought	Comments included
Strategic Director for Communities, Law and Governance	No	No
Finance Director	No	No
Cabinet Member	No	No
Date final report sent to Constitutional/Community Council/Scrutiny Team	20 October 2011	



NETWORK DEVELOPMENT



LEGEND

-  At any time waiting restrictions
-  Remove At any time waiting restrictions

Revision details	By	Date	Suffix
			A
			B

Project Number
 101104_LOCAL_PARKING_AMENDMENTS

Title
 MEETING_HOUSE_LANE
 PROPOSED_CHANGES_AAT_WAITING_RESTRICTIONS
 Layout

DETAILED DESIGN

Scale
 1:500

File Name
 APPENDIX_3

Drawn	Designed	Checked	Approved
MH	MH	TW	TW
28/03/11	28/03/11	28/03/11	28/03/11

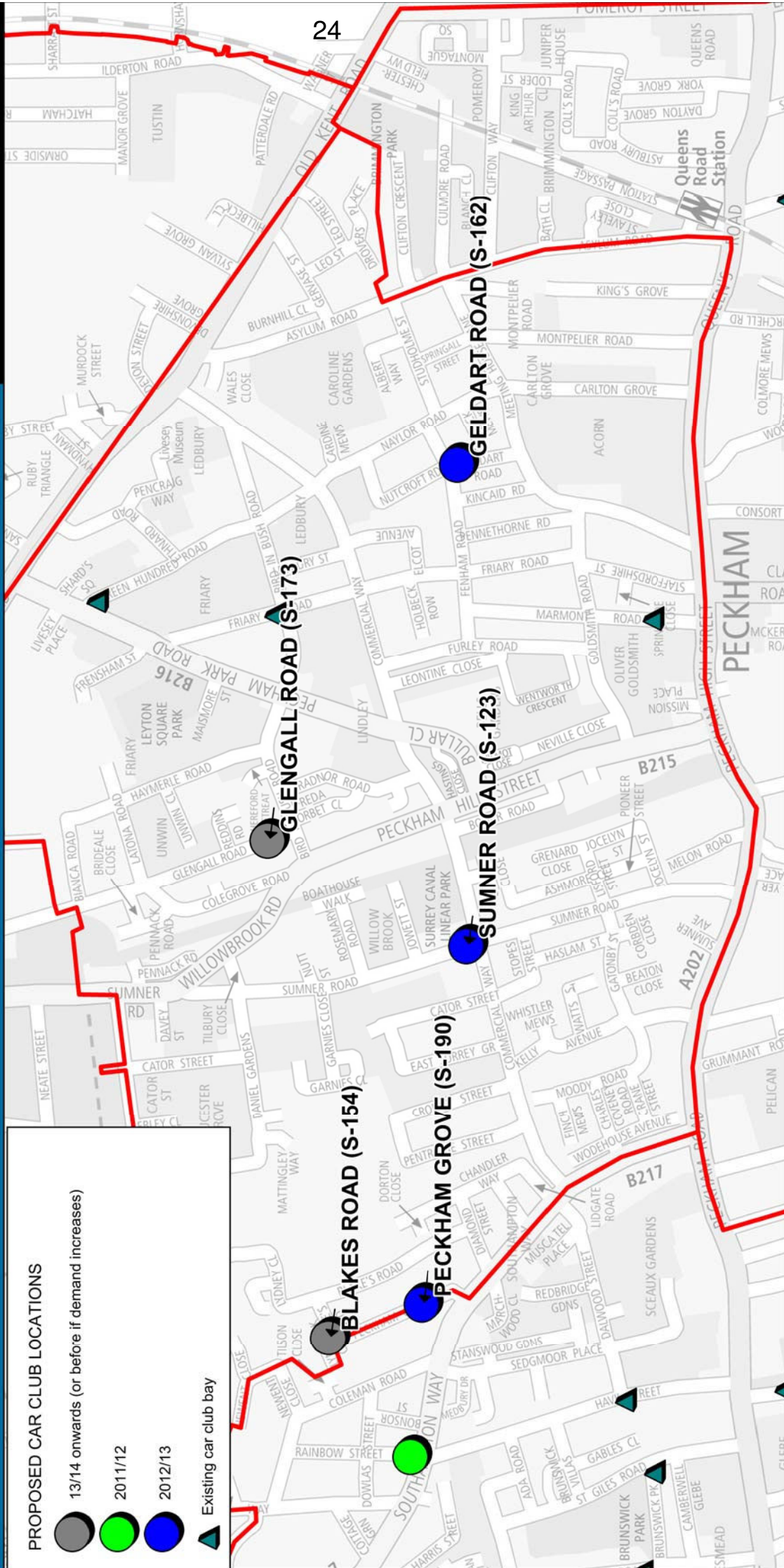
This map is based on Ordnance Survey material with the permission of Ordnance Survey on behalf of the Controller of Her Majesty's Stationery Office at Crown Copyright. All rights reserved. No part of this publication may be reproduced, stored in a retrieval system or transmitted in any form or by any means, electronic, mechanical, photocopying, recording or otherwise, without the prior written permission of Ordnance Survey. (0160318221 2010)

Car club expansion 2011/12, 2012/13 and 2013/14

Public Realm Projects (Parking Design)

PROPOSED CAR CLUB LOCATIONS

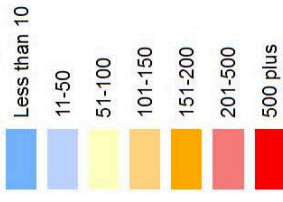
- 13/14 onwards (or before if demand increases)
- 2011/12
- 2012/13
- ▲ Existing car club bay



Southwark Car Club Demand: Remaining 'Unsatisfied' Demand

Probable Growth Required

Remaining demand (number of adults prone to joining a car club)



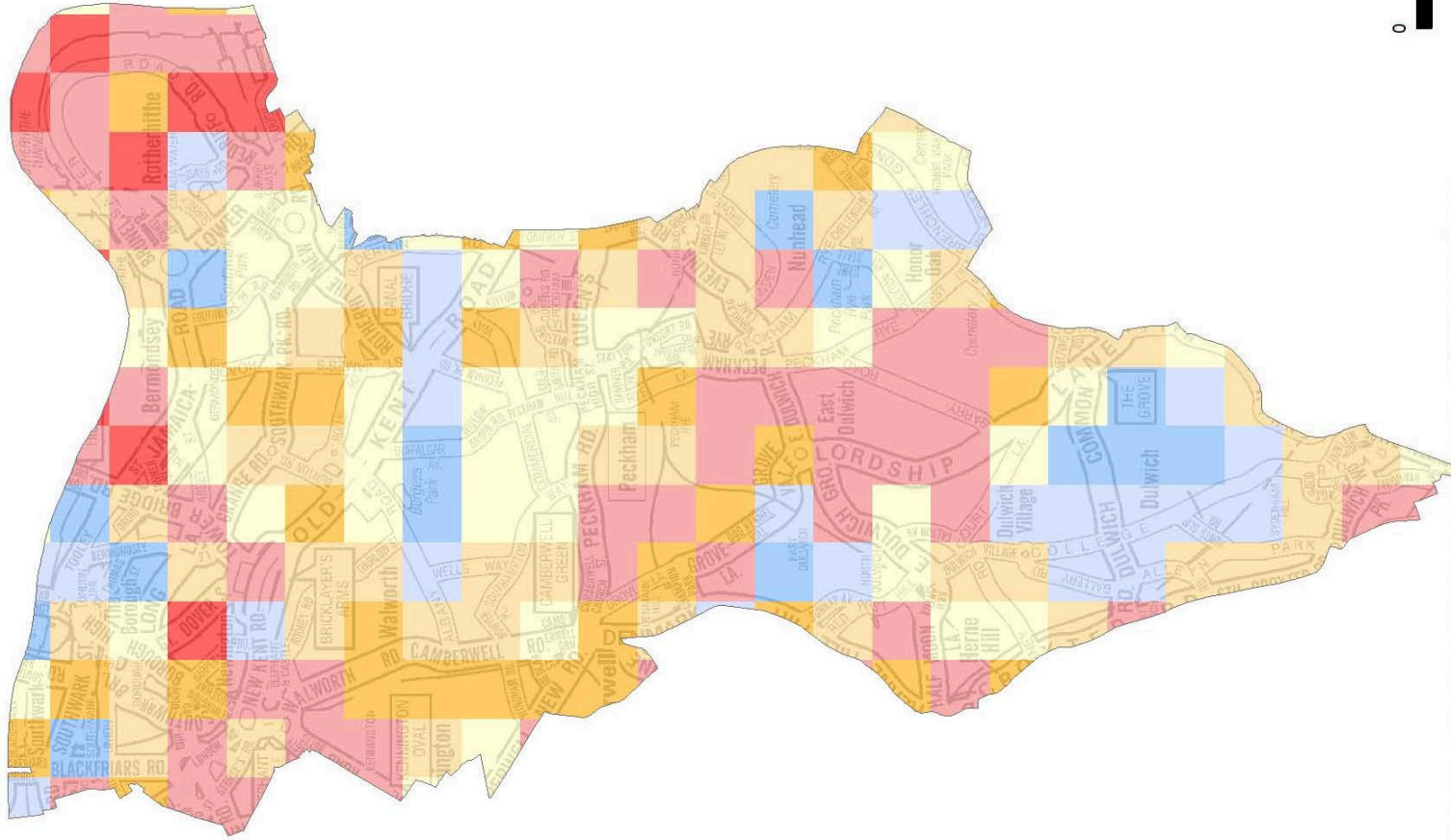
Map Description

This map takes the demand plotted in Map 1 and accounts for any demand already provided for through existing bays. The result is the demand left 'unsatisfied' within your borough, giving some direction to where future bay implementation could be concentrated.

As this mapping work has 'smoothed' the demand within each cell, these maps are good indicators of the general 'hot spot' areas of demand, but should not be treated as precise markers for the exact locations of future bay implementation.

What these maps do show us is how localised the demand for car clubs can be, and the importance of working closely with operators to identify the most appropriate locations.

Transport for London
 Produced by: Ryan Sweeney
 Checked by: Palestra
 197 Blackfriars Rd
 Approved by: Leon Thorne
 Date: 04/01/2011
 Southwark
 London
 Contact: 020 3054 2732
 SE1 8NU



1:35,000 at A3

0 0.5 1 2



Kilometres

TABLE 1			
SITE_ID	STREET	RECOMMENDED PRIORITY	COMMUNITY_COUNCIL
S-187	LEATHERMARKET STREET	2011/12	BERMONDSEY
S-179	MAGUIRE STREET	2011/12	BERMONDSEY
S-181	MARCIA ROAD	2011/12	BERMONDSEY
S-109	MONNOW ROAD	2012/13	BERMONDSEY
S-137	DRUMMOND ROAD	2013/14 onwards (or before, if demand increases)	BERMONDSEY
S-134	LONGLEY STREET	2013/14 onwards (or before, if demand increases)	BERMONDSEY
S-133	NECKINGER	2013/14 onwards (or before, if demand increases)	BERMONDSEY
S-124	ROTHERHITHE NEW ROAD	2013/14 onwards (or before, if demand increases)	BERMONDSEY
S-141	SOUTHWARK PARK ROAD	2013/14 onwards (or before, if demand increases)	BERMONDSEY
S-105	CHATHAM STREET	2011/12	BOROUGH & BANKSIDE
S-102	HOLLAND STREET	2011/12	BOROUGH & BANKSIDE
S-178	OMEARA STREET	2011/12	BOROUGH & BANKSIDE
S-104	COLNBROOK STREET	2012/13	BOROUGH & BANKSIDE
S-131	LAVINGTON STREET	2012/13	BOROUGH & BANKSIDE
S-132	SAWYER STREET	2012/13	BOROUGH & BANKSIDE
S-177	BROOK DRIVE	2013/14 onwards (or before, if demand increases)	BOROUGH & BANKSIDE
S-103	TABARD STREET	2013/14 onwards (or before, if demand increases)	BOROUGH & BANKSIDE
S-140	AVONDALE RISE	2011/12	CAMBERWELL
S-110	RAINBOW STREET	2011/12	CAMBERWELL
S-164	COUNCILLOR STREET	2012/13	CAMBERWELL
S-111	DANEVILLE ROAD	2012/13	CAMBERWELL
S-119	GAIRLOCH ROAD	2012/13	CAMBERWELL
S-115	GROVE LANE	2012/13	CAMBERWELL
S-138	BALDWIN CRESCENT	2013/14 onwards (or before, if demand increases)	CAMBERWELL
S-142	BLANCHEDOWNE	2013/14 onwards (or before, if demand increases)	CAMBERWELL
S-139	GROVE PARK	2013/14 onwards (or before, if demand increases)	CAMBERWELL
S-122	LOMOND GROVE	2013/14 onwards (or before, if demand increases)	CAMBERWELL
S-186	COLBY ROAD	2011/12	DULWICH
S-183	CHURCH APPROACH	2012/13	DULWICH
S-127	FRANKFURT ROAD	2012/13	DULWICH
S-120	TROSSACHS ROAD	2012/13	DULWICH
S-151	ALLEYN PARK	2013/14 onwards (or before, if demand increases)	DULWICH
S-182	ALLEYN PARK	2013/14 onwards (or before, if demand increases)	DULWICH
S-157	BASSANO STREET	2013/14 onwards (or before, if demand increases)	DULWICH
S-176	BOWEN DRIVE	2013/14 onwards (or before, if demand increases)	DULWICH
S-152	CRESCENT WOOD ROAD	2013/14 onwards (or before, if demand increases)	DULWICH
S-117	CROXTED ROAD	2013/14 onwards (or before, if demand increases)	DULWICH
S-128	DESENFANS ROAD	2013/14 onwards (or before, if demand increases)	DULWICH
S-118	DULWICH WOOD AVENUE	2013/14 onwards (or before, if demand increases)	DULWICH
S-185	EASTLANDS CRESCENT	2013/14 onwards (or before, if demand increases)	DULWICH
S-184	GILKES CRESCENT	2013/14 onwards (or before, if demand increases)	DULWICH
S-150	HITHERWOOD DRIVE	2013/14 onwards (or before, if demand increases)	DULWICH
S-143	RED POST HILL	2013/14 onwards (or before, if demand increases)	DULWICH
S-149	STRADELLA ROAD	2013/14 onwards (or before, if demand increases)	DULWICH
S-148	THOMPSON ROAD	2013/14 onwards (or before, if demand increases)	DULWICH
S-146	BELLWOOD ROAD	2011/12	NUNHEAD & PECKHAM RYE
S-145	MACHELL ROAD	2011/12	NUNHEAD & PECKHAM RYE
S-126	ASYLUM ROAD	2012/13	NUNHEAD & PECKHAM RYE
S-114	LINDEN GROVE	2012/13	NUNHEAD & PECKHAM RYE
S-172	NIGEL ROAD	2012/13	NUNHEAD & PECKHAM RYE
S-112	NUTBROOK STREET	2012/13	NUNHEAD & PECKHAM RYE
S-175	ST AIDANS ROAD	2012/13	NUNHEAD & PECKHAM RYE
S-189	SURREY ROAD	2012/13	NUNHEAD & PECKHAM RYE
S-113	WROXTON ROAD	2012/13	NUNHEAD & PECKHAM RYE
S-166	BELFORT ROAD	2013/14 onwards (or before, if demand increases)	NUNHEAD & PECKHAM RYE
S-167	BLENHEIM GROVE	2013/14 onwards (or before, if demand increases)	NUNHEAD & PECKHAM RYE
S-153	COLYTON ROAD	2013/14 onwards (or before, if demand increases)	NUNHEAD & PECKHAM RYE
S-156	DANIELS ROAD	2013/14 onwards (or before, if demand increases)	NUNHEAD & PECKHAM RYE
S-147	FRIERN ROAD	2013/14 onwards (or before, if demand increases)	NUNHEAD & PECKHAM RYE
S-116	GOODRICH ROAD	2013/14 onwards (or before, if demand increases)	NUNHEAD & PECKHAM RYE
S-161	MARMORA ROAD	2013/14 onwards (or before, if demand increases)	NUNHEAD & PECKHAM RYE
S-144	OLD JAMES STREET	2013/14 onwards (or before, if demand increases)	NUNHEAD & PECKHAM RYE
S-174	SOMERTON ROAD	2013/14 onwards (or before, if demand increases)	NUNHEAD & PECKHAM RYE
S-171	TALFOURD PLACE	2013/14 onwards (or before, if demand increases)	NUNHEAD & PECKHAM RYE
S-121	THE GARDENS	2013/14 onwards (or before, if demand increases)	NUNHEAD & PECKHAM RYE
S-162	GELDART ROAD	2012/13	PECKHAM
S-190	PECKHAM GROVE	2012/13	PECKHAM
S-123	SUMNER ROAD	2012/13	PECKHAM
S-154	BLAKES ROAD	2013/14 onwards (or before, if demand increases)	PECKHAM
S-173	GLENGALL ROAD	2013/14 onwards (or before, if demand increases)	PECKHAM
S-188	ANN MOSS WAY	2011/12	ROTHERHITHE
S-107	NORWAY GATE	2011/12	ROTHERHITHE
S-108	ROTHERHITHE STREET	2011/12	ROTHERHITHE
S-125	ROTHERHITHE STREET	2011/12	ROTHERHITHE
S-168	BRUNSWICK QUAY	2012/13	ROTHERHITHE
S-136	BARKWORTH ROAD	2013/14 onwards (or before, if demand increases)	ROTHERHITHE
S-165	HAWKSTONE ROAD	2013/14 onwards (or before, if demand increases)	ROTHERHITHE
S-155	ILDERTON ROAD	2013/14 onwards (or before, if demand increases)	ROTHERHITHE
S-163	MANOR GROVE	2013/14 onwards (or before, if demand increases)	ROTHERHITHE
S-158	ROPE STREET	2013/14 onwards (or before, if demand increases)	ROTHERHITHE
S-169	ROTHERHITHE STREET	2013/14 onwards (or before, if demand increases)	ROTHERHITHE
S-106	RUSSIA DOCK ROAD	2013/14 onwards (or before, if demand increases)	ROTHERHITHE
S-130	SWAN ROAD	2013/14 onwards (or before, if demand increases)	ROTHERHITHE
S-135	NILE TERRACE	2012/13	WALWORTH
S-129	WANSEY STREET	2012/13	WALWORTH
S-159	ADDINGTON SQUARE	2013/14 onwards (or before, if demand increases)	WALWORTH
S-170	HAMPTON STREET	2013/14 onwards (or before, if demand increases)	WALWORTH
S-160	ROCKINGHAM STREET	2013/14 onwards (or before, if demand increases)	WALWORTH
S-180	THURLOW STREET	2013/14 onwards (or before, if demand increases)	WALWORTH

Item No. 15	Classification: Open	Date: 31 October 2011	Meeting Name: Peckham Community Council
Report title:		Peckham Community Council Fund 2011-12	
Ward(s) or groups affected:		Peckham and Livesey wards	
From:		Stephen Douglass Head of Community Engagement	

RECOMMENDATION

1. That the Peckham Community Council reallocates £643.00 of the Peckham Community council fund 2011-12. The groups to be considered are set out in Appendix 2.

BACKGROUND INFORMATION

2. The Community Council Fund provides revenue grants of between £100 and £1,000 for community projects. Applications are considered by the borough's eight community councils, which have £15,260 each, for projects that will benefit the community. All the funding for the Peckham Community Council fund was allocated at the July 2011 Community Council meeting.
3. The amount to be allocated at this meeting is the result of Southwark Black Parents Forum being unable to deliver the Peckham Community Council fund's funded activity, which was allocated to them at the July 2011 meeting.

KEY ISSUES FOR CONSIDERATION

4. Appendix 1 contains the guidelines for the fund.
5. The Community Council Fund forms part of the Southwark 2016 objectives of:
 - Improving life chances
 - A better place for people
 - Delivering quality services.
6. Because of the small amount of money involved, members may wish to consider reallocating the funding to previously unsuccessful applications which can be delivered before the 31 March 2012. (See applications list in attached Appendix 2).

Community impact statement

7. The allocation of the Peckham Community Council fund will, in the main, affect the people living in the Peckham Community Council area. However, in making the area a better place to live and improving life chances for local people, the community council fund activities will have an impact on the whole of Southwark.
8. The Peckham Community Council fund aims to increase community participation and activity within the area and provide such groups with the support that they would

have not been able to access otherwise. The allocation of this money to another community project will have a positive impact on the community.

Resource implications

9. The reallocation of the above funds will allow for the Peckham Community Council Community fund budget to be totally spent by the 31 March 2012 and is therefore possible within existing resources.

Legal/Financial implications

10. The council has power under section 2 of the Local Government Act 2000 ("the Act") to do anything which it calculates is likely to promote or improve the economic, social or environmental well being of the area. This power can be exercised for benefit of the whole or any part of the council's area or for the benefits of any person resident or present in the area.
11. Section 2(3) of the Act requires the Council to have regard to its Community Strategy when determining whether or not to exercise this power. Section 2(4) of the Act specifies that this includes a power to give financial assistance to any person.
12. The council has power under the Act to provide funding to voluntary organisations but in exercising this power regard must be had to the council's sustainable community strategy. These grants, from the community fund, are from revenue budgets.
13. The Executive in November 2005 agreed for this to be done by the community councils. The money can be granted to community projects ranging from cultural celebrations to providing equipment for local sports teams.

BACKGROUND PAPERS

14. None

APPENDICES

No.	Title
Appendix 1	Peckham Community Council Fund 2011-12 Information sheet.
Appendix 2	Peckham Community Council Fund 2011-12 Applicants list.

AUDIT TRAIL

Lead Officer	Darryl Telles, Neighbourhoods Manager	
Report Author	Marian Farrugia, Neighbourhood Co-ordinator Nunhead and Peckham	
Version	Final	
Dated	18 October 2011	
Key Decision?	No	
CONSULTATION WITH OTHER OFFICERS / DIRECTORATES / CABINET MEMBER		
Officer Title	Comments Sought	Comments included
Strategic Director of Communities, Law & Governance	Yes	Yes
Finance Director	No	No
Cabinet Member	No	No
Date final report sent to Constitutional Team	18 October 2011	

Community Council Fund

2011 - 2012



Information sheet

www.southwark.gov.uk/communityfund

Your community council has £15,000 to support activities run by local groups for local people

Who can apply?

- New and emerging local groups
- Small local organisations (having less than £30,000 in their bank account)
- Any constituted local group
- Any group or individual that has a constituted local organisation to administer the funds on their behalf
- Groups that are active within the community council area

Who cannot apply?

- Organisations not established in the UK
- Organisations which do not have any local links
- Political groups or organisations

What kind of things can be funded?

The community council fund can fund projects benefitting people who live in the community council area, for example

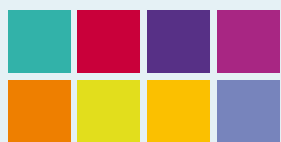
- One-off events such as fun days and festivals
- A series of workshops or activities involving members of the local community
- Publicity or merchandise to advertise an event you are doing

What kind of things will not be funded?

- Loans or interest payments
- Political groups or activities promoting political beliefs
- Activities which have happened or started before the grant decision date
- Activities that finish after 31 March 2012
- Activities that do not benefit people living in the community council area
- Anything which is capital funding, eg, building works or large playground equipment

How much can groups apply for?

- From £100 up to £1000. Groups can only submit one application.



COMMUNITY COUNCILS
A voice for your community

Bermondsey CC
Gill Kelly
T: 020 7525 3690
E: gill.kelly@southwark.gov.uk

Borough and Bankside CC
Pauline Bonner
T: 020 7525 1019
E: Pauline.Bonner@southwark.gov.uk

Camberwell CC
Grace Semakula
T: 020 7525 4928
E: grace.semakula@southwark.gov.uk

Dulwich CC
Grace Semakula
T: 020 7525 4928
E: grace.semakula@southwark.gov.uk

Nunhead and Peckham Rye CC
Nadine James
T: 020 7525 5503
E: Nadine.James@southwark.gov.uk

Peckham CC
Nadine James
T: 020 7525 5503
E: Nadine.James@southwark.gov.uk

Rotherhithe CC
Gill Kelly
T: 020 7525 3690
E: gill.kelly@southwark.gov.uk

Postal address for all the above
Community engagement,
Communities, Law and
governance,
Southwark Council,
PO Box 64529
London
SE1P 5LX

How can people apply?

You can get an application form either by

- going to www.southwark.gov.uk/communityfund to download it or
- by contacting the officer for the relevant CC area as listed on the left.

After filling in the form, send it back by post or email to the officer for the relevant CC area as listed on the left or at the back of the application form.

Closing date for receiving all applications is **Monday 16 May 2011**.

Late or partially filled applications will not be considered.

How can I get more information or support?

If you would like help with filling in the application please contact the officer for the relevant CC area as listed on the left.

How does the scheme work?

Applications will be screened to make sure they meet the criteria above. Remember that eligibility for the scheme is also conditional on the applicant providing all the necessary information outlined in the application form which includes evidence on how they are or will be complying with appropriate safeguarding and health and safety policies.

Applications not fulfilling any of the above criteria will not be considered.

Locally elected councillors will be responsible for making decisions on all the eligible applications using the priorities outlined below:

- Applications that show a high level of involvement by the local community.
- Applications that involve groups working together.
- Activities delivered by:
 - New and emerging groups/individuals
 - We will give preference to groups who have not received community council funding in the last two years
 - Groups who are based in the community council area.
- Activities taking place within the community council area – unless they involve an outing, or there is lack of space for it within the area.
- Where the majority of people benefitting from the activity live within the community council area.

Decisions for applications will be made and announced by councillors at the first community council meeting which will take place after the end of June 2011.

Every applicant will be notified of decisions by a letter no longer than 15 working days after the decision is taken. Successful applicants will be asked to sign and return a condition of funding agreement. It is only once this agreement has been received that we can release the funding.

So when planning your activity please make sure that you give enough time for this and that your activity does not start until at least four weeks after the decision date.

Please note that groups that are not constituted or individuals who would like to apply with project ideas should get in touch with the community council development officer (contact details on the left) for advice as soon as possible. Remember all applications – whether by email or post - must reach us by **Monday 16 May 2011**.

APPENDIX 2

Peckham Community Council Fund 2011– 2 Application List – updated October 2011.

Ward	Project Ref	Applicant	Activity Name	Nature of Activity	Activity Dates	% local Beneficiaries	Amount requested	Amount Awarded July 2012
PCC1	Livesey Ward	Amatta Daughters Association	Amatta Daughter's Association Summer Fun day	Summer fun day for the Amatta Daughters Association	Last week in August 2011	85%	£1,000.00	
PCC2	Peckham	Arts Express	Carve in the Community	9 day stone carving festival	20 – 28 Aug 2011	90%	£1,000.00	£1,000
PCC 3	Peckham	Burgess Park Food Project	Community food and preserving	Summer events for people to learn about utilising local seasonal foods - e.g. jams, cordials etc.	Summer-Autumn 2011	80%	£998.00	£998
PCC 4	Peckham	Caporales San Simon UK	Bolivan Dance Caporles San Simon UK	Buying of costumes and music equipment for a Bolivian independence day event in Peckham.	July-Aug 2011	60%	£900.00	
PCC 5	Livesey	COVO Connecting Voices	Movement & well-being workshops for Elders	8 dance and movement sessions for pensioners	Sept - Oct 2011	90%	£960.00	£960
PCC6	Livesey	Dorothy Sinclair	Signage for Battle/Caversham House Community Garden	Signage for Battle/Caversham House Community Garden	Aug 2011	100%	£200.00	
PCC 7	Peckham	Free Film Festivals	SE15 Young Filmmakers Competition	Film making workshops & competition for 20 young people 11-25 as part of Peckham Free Film Festival	Aug/Sept 2011	70-80%	£900.00	£900

Ward	Project Ref	Applicant	Activity Name	Nature of Activity	Activity Dates	% local Beneficiaries	Amount requested	Amount Awarded July 2012
PCC 8	Livesey	Friary Environmental Network	Upgrading Garden areas near Lynn, Lewes & Reading Houses	3 community planting sessions to plant a diversity of wild plants	School Holidays 2011	100%	£310.00	£310
PCC 9	Peckham	Ghana Ashanti Community Group	Noble Blackson-Amankwah	Ghana-Ashanti cultural fair - based on dance	29 Aug 2011	90%	£890.00	
PCC 10	Peckham	GLOT Fashion Academy	GLOT Fashion Academy	6 traditional African sewing lessons over 6 weeks and a fashion show.	Aug 2011	90%	£1,000.00	£1000
PCC 11	Peckham	Gloucester Grove TRA	Gloucester Grove Estate Family Fun Day	Family Fun day on Gloucester Grove Estate	Summer 2011	100%	£1,000.00	£450
PCC 12	Peckham	Inspire Arts Enterprise	Fun Day integrating the local community	Fun day for young people & local community including dance, poetry & theatre.	Jul 2011	100%	£1,000.00	
PCC 13	All wards	Jason Cameron	The Peckham Village	Performance project to inspire and portray a positive image of young people in Peckham through performance art.	Sept-Nov 2011	95%	£1,000.00	

Ward	Project Ref	Applicant	Activity Name	Nature of Activity	Activity Dates	% local Beneficiaries	Amount requested	Amount Awarded July 2012
PCC 14	Peckham	Little People's World	Little People's World family summer events	3 fun days & 3 trips for local families	3 - 18 August 2011	85%	£900.00	£900
PCC 15	Peckham	Macpro Basketball Club	Macpro Basketball taster sessions	One day Basket ball taster sessions including DJ, shoutouts etc.	Aug 2011	100%	£996.00	£876
PCC 16	Peckham	MCSAS UK	Youth Graffiti Arts on Canvas show	Young people making and exhibiting graffiti art work.	5- 9 July 2011	100%	£998.00	£998
PCC 17	Peckham	Millwall Community Scheme	Kickz-Millwall Street Pro (summer 2011)	2 X 3hr Friday nightly football sessions for young people - for 6 weeks volunteering possibilities and workshops	29 July - 02 Sept 2011	90%	£1,000.00	
PCC 18	Livesey Ward /all area	Our Lady of Sorrow Sierra Leonean Association	Our Lady of Sorrow Sierra Leonean Association Outing	Seaside outing for Association members & families	06 Aug 2011	99%	£1,000.00	
PCC 19	Peckham/All wards	Peckham Area Forum	Peckham Black History Month	An event marking Black History Month in Peckham - including speakers, displays etc.	Oct 2011	100%	£1,000.00	

Ward	Project Ref	Applicant	Activity Name	Nature of Activity	Activity Dates	% local Beneficiaries	Amount requested	Amount Awarded July 2012
PCC 20	Livesey	Sickle Cell & Young Stroke Survivors	Sickle Cell nutritional workshop	Nutritional workshop to raise awareness of sickle cell community.	Feb 2012	80%	£1,000.00	£1000
PCC 21	Peckham	Somali Youth Action Forum	Football project - accessing Damilola Taylor Centre	20 Sunday football sessions for Somali men 15 -25	Sept 2011 - March 2012.	80%	£1,000.00	
PCC 24	Livesey	St John's Church	Community facility improvement day	A community day during which participants can improve the facilities for themselves by decorating, cleaning, making curtains etc, helping to make the facilities more welcoming.	Aug 2011	99%	£1,000.00	
PCC 25	Peckham	Sumner Road Residents Assoc.	Historical trip on the Thames	Boat trip on the Thames for local residents	Jul 2011	100%	£1,000.00	£1,000
PCC 26	Peckham	Surrey Canal Allotment Society	Grow Your Own Garden	Allotment Open day to raise awareness about growing your own food.	Summer 2011	95%	£775.00	£775
PCC 27	All wards	The Ernest Foundation	Reaching Out	HIV & STI education leaflets and flyers.	July-Aug 2011	100%	£1,060.00	£1,000

Ward	Project Ref	Applicant	Activity Name	Nature of Activity	Activity Dates	% local Beneficiaries	Amount requested	
PCC 28	Livesey Ward	Unwin & Friary T&RA	GCSE revision for Unwin & Friary young residents.	20 Classes for young estate residents preparing for GCSE exams.	Sept. 2011	100%	£1,000.00	
PCC 29	Peckham	Wickway Community Centre	Wickway Community Centre Family fun day	Community family fun-Day	10-Sep 2011	96%	£890.00	£450
PCC 30	Peckham	Wisegem	Teenage pregnancy awareness and event	A project consisting of a series of visits to liaise with 5 T&RAs 7 5 faith groups with the aim of holding an event to raise teenage pregnancy awareness - including brochures & fliers	August 2011 onwards	70%	£1,000.00	£1,000
PCC 31	All wards	World of Hope	World of Hope 'Time out - stand up - oppose violence against girls'	3 day Residential for 15 local young girls 13 -21 with domestic violence experience to train as mentors.	5 - 8th Aug 2011	100%	£1,000	£1,000
PCC 32	Peckham	Dulwich Table Tennis Club	Dulwich Table Tennis Club	Table Tennis coaching sessions for 9 weeks	Summer 11	88%	£984	
Total							£27,679	

Item No. 16	Classification: Open	Date: 31 October 2011	Meeting Name: Peckham Community Council
Report title:	Planning application and planning enforcement performance for period 01/04/2011 to 31/08/2011.		
Ward(s) or groups affected:	Peckham and Livesey (south of Old Kent Road)		
From:	Head of Development Management		

RECOMMENDATION

- 1 That the report be noted.

BACKGROUND INFORMATION

- 2 This report monitors the planning application, planning appeal, planning enforcement and planning enforcement appeal activity and performance within the Peckham Community Council area.
- 3 Performance on the timeliness of decision making on planning applications and planning enforcement investigations is measured against borough-wide targets. For planning applications performance is split into three categories. The categories are for large scale and small scale 'major' applications, for 'minor' applications and for 'other' applications. Details of the types of applications falling within these three categories are set out in Appendix 1.
- 4 The locally set target for all three categories of planning applications is for 75% of all applications to be determined within statutory target period. The statutory target time period for the determination of 'major' applications is 13 weeks, or 16 weeks where the application is accompanied by an Environmental Impact Assessment, and for applications in the 'minor' and 'other' categories it is 8 weeks.
- 5 The significance of the 13 and 8 week target periods is that if an application has not been determined by the expiry of this period, an application's statutory expiry date, an appeal can be made to The Planning Inspectorate against the non-determination of the application.
- 6 The performance target for appeals is based on the number of all decided appeals that were allowed (i.e. lost by the Council) as a % of all appeal decisions made where the Council has refused planning permission. This target is currently set at 30%. The calculation of this performance indicator does not include appeals against the imposition of conditions or non-determination [where the Council has not made a decision on an application]. The calculation also excludes all other appeal types, e.g. those in respect of advertisements, certificates of lawfulness, prior approvals and enforcement appeals.
- 7 The local performance target for planning enforcement investigations is for in 80% of cases a decision to be made within 8 weeks of the start date for the investigation as to

whether or not there has been a breach of planning control.

KEY ISSUES FOR CONSIDERATION

Planning application performance

- 8 Major applications: One small scale major application was decided. It was decided in target and was granted permission.
- 9 Minor applications: 15 applications were decided of which 11 (73.3%) were decided in target. 12 were granted permission and three refused permission.
- 10 Other applications: Seven applications were decided of which 6 (85.7%) n were decided in target. Six were granted permission and one was refused permission.
- 11 Applications received and decided: 25 applications were received, 23 decided and one was withdrawn. At the end of the period there were 12 outstanding applications in the Community Council area (see Appendix 2).
- 12 Of the decisions made, all 23 (100%) were made under delegated powers.

Planning appeals performance

- 14 During the period two appeal decisions were received against decisions made by the council. Both were dismissed and related to refusal of planning permission decisions made under delegated powers. Two new appeals were received during the period and there are currently no outstanding appeals in the Community Council area.

Summary of appeals performance

- 15 A summary of the details of the decided appeals is set out in Appendix 3.

Planning enforcement performance

- 16 New investigations: During the period 7 new investigations were started. Of these 4 related to Peckham and 3 to Livesey Ward (see table Appendix 4).
- 17 Decided investigations: Decided investigations are those where a decision has been made that either:
 - there was a breach of planning control, and formal enforcement action was required, or
 - there was a breach of planning control, but it was not expedient to take formal enforcement action, or
 - there was a breach of planning control but the breach has since ceased or been regularised, or
 - there was a breach of planning control but it was now immune from formal enforcement action, or
 - there was not a breach of planning control.
- 18 Six investigations which were decided of which three (50%) were decided within the eight week target (see Appendix 7 for comparative data with other Community Council areas).
- 19 Of the decided investigations the decision was that in 2 (33%) of investigations there was

no breach of planning control, in one (17%) the breach ceased as a result of the intervention of the council. In a further 2 (33%) cases the breach was regularised by the grant of planning permission and in one case enforcement action was not considered expedient (see Appendix 5). Appendix 6 shows details of investigations received since 01/01/2009 that are still open.

Formal enforcement action

- 20 Formal enforcement action is being taken against the following breaches of planning control:

11 Drovers Place – Officers are considering appropriate action appropriate action, including the execution of works as specified by Enforcement Notice issued on 23rd March 2007 for the purposes of Section 178 of the Town and Country Planning Act 1990 (as amended) to comply with the requirements of Enforcement Notice (Ref:LEG /RP/ PL/122677/NS) issued on 23rd March 2007. The enforcement notice required the freeholder to remove the unauthorised single storey rear extension in its entirety returning the rear elevation of the property to its former un-extended condition.

The freeholder of the property has not undertaken any actions pursuant to achieving compliance with the requirements of the enforcement notice, despite conviction in the Camberwell Green Magistrates Court on 15th May 2009 for failure to comply with the requirements of the enforcement notice; and subsequent requests and notifications by Southwark Council.

There is no evidence to suggest that the freeholder of the property has undertaken actions to comply with the requirements of the enforcement notice. Nor is there any evidence to suggest that the freeholder intends to undertake works to comply with the requirements of the enforcement notice.

The unauthorised single storey rear extension forms a bulky obtrusive feature which occupies the entire length of the garden at the rear of the dwelling house; and results in a loss of outlook, overshadowing to adjoining properties and has a negative visual impact on the property and surrounding area contrary to Policy 3.2 'Effect on Amenity', 3.12 'Quality in Design' and 3.13 'Urban Design' of the Southwark Plan (2007) and Supplementary Planning Document 'Residential Design Standards' (2008)

18 Newent Close, London, SE15 – Follow up action on a listed building enforcement issued following the unauthorised installation of uPVC windows within the front (x3) and rear elevations (x3) of a Grade-II listed building. The notice required the owner of the listed building to remove the unauthorised uPVC windows from the front and rear elevation of the building; and to replace with timber framed sash windows which replicate the original style of the listed building and to include the arched Gothic-style window on the front elevation of the ground floor.

Ashosh House, 179-181 Queens Road, SE15 – Enforcement notice complied with. Notice issued against the unauthorised mixed use of the site for purposes including a hotel on the upper floors and a place worship on the ground and lower basement level. The premises are current vacant.

Summary of planning enforcement performance

- 21 There are 32 outstanding enforcement investigations within the Peckham Community Council area including the formal enforcement action outlined above. The majority of the outstanding cases are unauthorised satellite dishes, places of worship and

advertisements. The priority going ahead is to progress the formal enforcement action and to reduce the number of outstanding cases.

- 22 There were no planning enforcement appeal decisions received in respect of the Community Council area during the period.

Community impact statement

- 23 The content of this report monitoring development management performance is judged to have no or a very small impact on local people and communities. However, poor performance can have an adverse effect on all individuals, businesses and other organisations within the community who submit planning applications and who do not get a decision within a reasonable period.

Consultations

- 24 No consultation has been carried out in respect of the contents of this report which is solely for the purpose of advising on the performance of the Development Management service in the determination of planning applications and planning appeals.

Human rights implications

- 25 This report does not engage human rights under the Human Rights Act 2008 (the HRA). The HRA prohibits unlawful interference by public bodies with conventions rights. The term 'engage' simply means that human rights may be affected or relevant.
- 26 Any rights potentially engaged by this report are not considered to be unlawfully interfered with.

BACKGROUND DOCUMENTS

Background Papers	Held At	Contact
Planning application performance statistics	Regeneration and Neighbourhoods Department 160 Tooley Street London SE1 2TZ	Planning enquiries telephone: 020 7525 5403 Planning enquiries email: planning.enquiries@southwark.gov.uk

APPENDICES

No.	Title
Appendix 1	Definition of 'major', 'minor' and 'other' applications
Appendix 2	Planning applications decided
Appendix 3	Planning appeals decided
Appendix 4	Enforcement investigations received
Appendix 5	Enforcement investigations closed
Appendix 6	Enforcement investigations open
Appendix 7	Enforcement investigations performance

AUDIT TRAIL

Lead Officer	Gary Rice, Head of Development Management	
Report Author	Phil Chambers, Group Manager - Project Management	
Version	Final	
Dated	06 October 2011	
Key Decision	No	
CONSULTATION WITH OTHER OFFICERS / DIRECTORATES / EXECUTIVE MEMBER		
Officer Title	Comments Sought	Comments included
Strategic Director of Communities, Law & Governance	No	No
Strategic Director of Regeneration and Neighbourhoods	No	No
Strategic Director of Environment and Housing	No	No
Date final report sent to Constitutional Team	21 October 2011	

APPENDIX 1

Definition of 'major', 'minor' and 'other' applications**Large scale major developments¹**

- 1 Dwellings
- 2 Offices/research and development/light industry
- 3 Heavy industry/storage/warehousing
- 4 Retail, distribution and servicing
- 5 Gypsy and traveller pitches
- 6 All other large scale major developments

Small scale major developments²

- 7 Dwellings
- 8 Offices/research and development/light industry
- 9 Heavy industry/storage/warehousing
- 10 Retail, distribution and servicing
- 11 Gypsy and traveller pitches
- 12 All other small scale major developments

Minor developments³

- 13 Dwellings
- 14 Offices/research and development/light industry
- 15 Heavy industry/storage/warehousing
- 16 Retail, distribution and servicing
- 17 Gypsy and traveller pitches
- 18 All other minor developments

Other developments

- 19 Minerals
- 20 Changes of use -where no other works requiring planning permission are involved
- 21 Householder developments
- 22 Advertisements
- 23 Listed building consents to alter/extend
- 24 Listed building consents to demolish
- 25 Conservation Area consents
- 26 Certificates of lawful development
- 27 Notifications

Notes

¹ Large scale major applications comprise residential development for the creation of 200 or more dwellings for full applications and outline applications for sites of 4ha. or more.

For all other proposals it covers full applications for developments for the creation of 10,000sq.m.or more of new floorspace and for outline applications for sites of 2ha. or more.

² Small scale major applications comprise residential development for the creation of 10 to 199 dwellings for full applications and outline applications for sites from 0.5ha to less than 4ha.

For all other proposals it covers full applications for developments for the creation of between 1,000sq.m.and 9,999sq.m.of new floorspace and for outline applications for sites from 1.0ha to 2ha.

³ Minor applications comprise residential development for the creation of 1-9 dwellings for full applications and outline applications where the site is less than 0.5ha.

For all other proposals it covers full applications for developments for the creation of less than 1,000m² of new floorspace and for outline applications where the site area is less than 1.0ha.

APPENDIX 2

Planning applications decided between 01/04/2011 to 31/08/2011

	No. decided	% decided in target	Granted	Refused
Large scale major	0	0	0	0
Small scale major	1	100	1	0
Minor	15	73	12	3
Other	7	86	6	1
Total	23	74	19	4

APPENDIX 3

Planning appeals decided between 01/04/2011 to 31/08/2011

Address: 670-672 OLD KENT ROAD, LONDON, SE15 1JF
Application No: 10-AP-3399
Ward: Livesey
Community C'cil: Peckham
Proposal: Removal of upper section of rear extract flue and extend it up flank wall of building at second floor level.
Appeal Decision: Dismissed
Date of Decision: 30/08/2011
Appeal Type: Refusal of Planning Permission
Appeal Ref: APP/A5840/A/11/2151197/NWF
Recommendation: Refuse permission
Decision Level: Delegated Officer
Council's Decision: Refused
Date of Decision: 09/03/2011

Summary of decision:

The Inspector considered the main issue to be the effect of the proposal on the street scene.

He considered that the existing flue is not visible unless one walks from the Old Kent Road along the lane at the side of the building. When the flue can be seen its size and appearance make it an unattractive feature at the rear of the building. As the gable of the building is unaffected by alterations and accretions and is open to view from the Old Kent Road re-routing the flue onto this gable would introduce inappropriate characteristics into the street scene in a visually intrusive way. In addition, in this location, it would diminish the setting of the adjacent locally listed church.

Address: 39-41 WILLOWBROOK ROAD, LONDON SE15 6BW
Application No: 10-AP-1335
Ward: Livesey
Community C'cil: Peckham
Proposal: Conversion of the existing building and creation of new part second and third floors, with terrace to third floor, to create 3 self-contained residential units (comprising 1 x 1 bedroom, 1 x 3 bedroom and 1 x studio units), with elevational changes to lower floors.
Appeal Decision: Dismissed
Date of Decision: 26/05/2011
Appeal Type: Refusal of Planning Permission
Appeal Ref: APP/A5840/A/10/2142450/NWF
Recommendation: Refuse permission
Decision Level: Delegated Officer
Council's Decision: Refused
Date of Decision: 22/09/2010

Summary of decision:

The Inspector considered the main issues to be (a) the effect of the proposal on the character and appearance of the area, (b) whether it would provide satisfactory living standards for future occupants with particular regard to room sizes and (c) the living conditions of neighbours.

On (a) the Inspector considered that the two parts of the existing building are of different proportions with various elements that do not relate well to each other and that it is of poor architectural quality. Whilst the proposal made some effort to unify the two parts of the building the proposed zinc covered Mansard roof would introduce an additional material out of keeping with the brick work below. He concluded that the proposal would not be of significantly better architectural quality than the existing but would be bigger and more prominent so having a greater adverse impact on the street scene. The proposal would therefore be harmful to the character and appearance of the area. It would also harm the setting of the nearby listed building.

On (b) he noted that the overall size of the proposed units would be at or near the minimum in the Council's Residential Design Standards SPD. He stated that as an SPD the standards are to be interpreted with some flexibility. It was clear however that because of the shape of the building and configuration of existing structural walls and staircase the room layouts would include awkward angles

and irregular shapes making furnishing difficult and lead to an inefficient use of the space available. In such circumstances he did not consider that it would be appropriate to accept rooms with floor areas at or near the minimum. Some of the rooms would be below the minimum standard and with their awkward shape would feel unpleasantly cramped and congested. He concluded that these rooms would not provide satisfactory living conditioned for future occupiers.

On (c) the Inspector felt that the windows in the adjoining property would receive less daylight if the proposal was implemented. However, although it was thought that the adjoining building was in residential use he had no indication of the internal layout or use of the rooms served by the windows. He was therefore unable to determine if the proposal would have an adverse effect on the living condition of neighbours.

APPENDIX 4

Enforcement Investigations received between 01/04/2011 and 31/08/2011

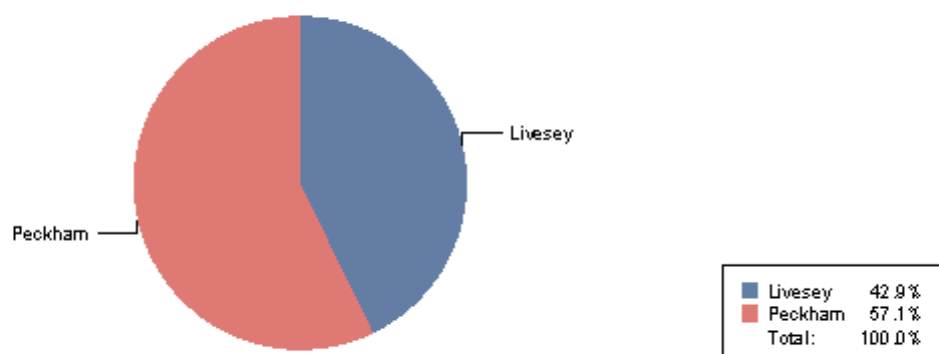
Totals by Ward

	2011	Total
Livesey	3	3
Peckham	4	4
Total	7	7

Totals by Community Council

	2011	Total
Peckham	7	7
Total	7	7

Percentages by Ward



APPENDIX 5

Enforcement Investigations decided between 01/04/2011 and 31/08/2011

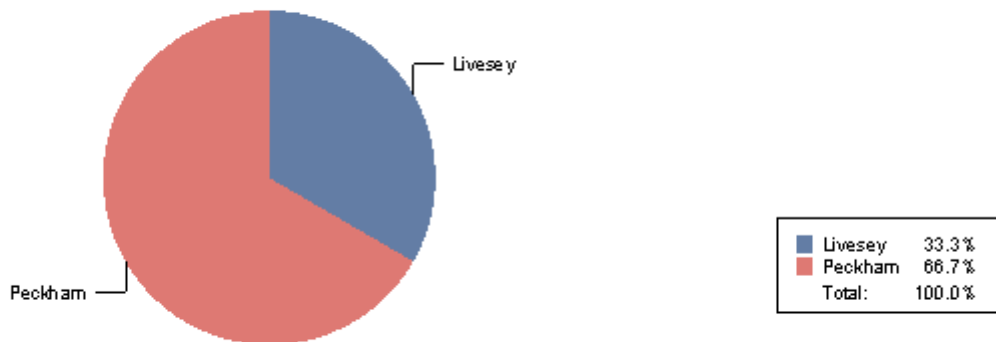
Summary totals by Ward

	BC	BR	NB	NE	Total
Livesey	1	0	0	1	2
Peckham	0	2	2	0	4
Total	1	2	2	1	6

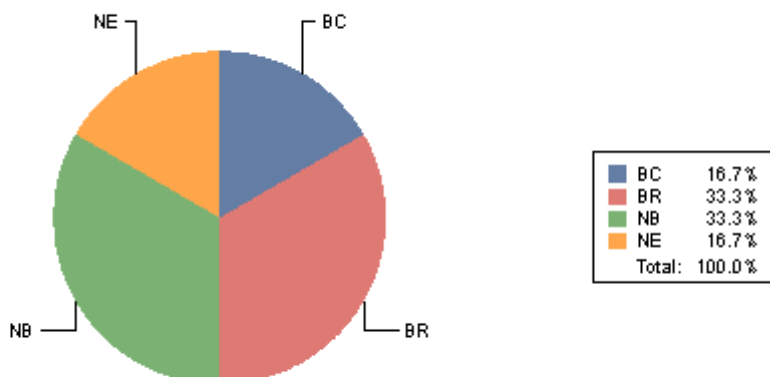
Summary totals by Community Council

	BC	BR	NB	NE	Total
PECK	1	2	2	1	6
Total	1	2	2	1	6

Ward percentages



Percentages of reasons for closure



NB = No breach of planning control. BC = Breach has ceased. BI = Breach immune from action. BR = Breach regularised
 NE = Breach of control but not expedient to take action. M= Miscellaneous

APPENDIX 6

Open Enforcement Investigations, received between 01/01/2009 and 31/08/2011

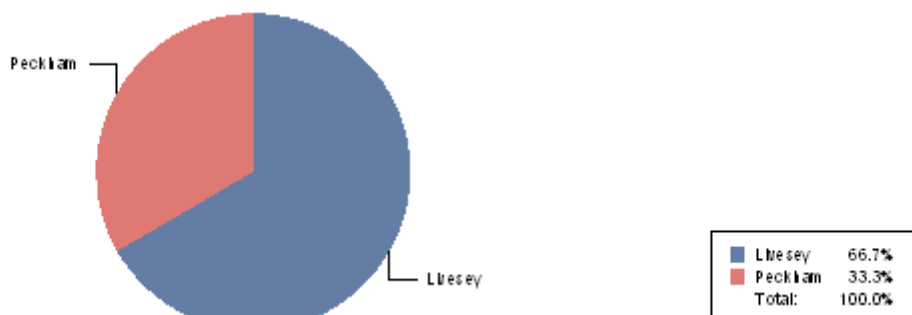
Totals by Ward

	2009	2010	2011	Total
Livesey	9	4	3	16
Peckham	0	4	4	8
Total	9	8	7	24

Totals by Community Council

	2009	2010	2011	Total
Peckham	9	8	7	24
Total	9	8	7	24

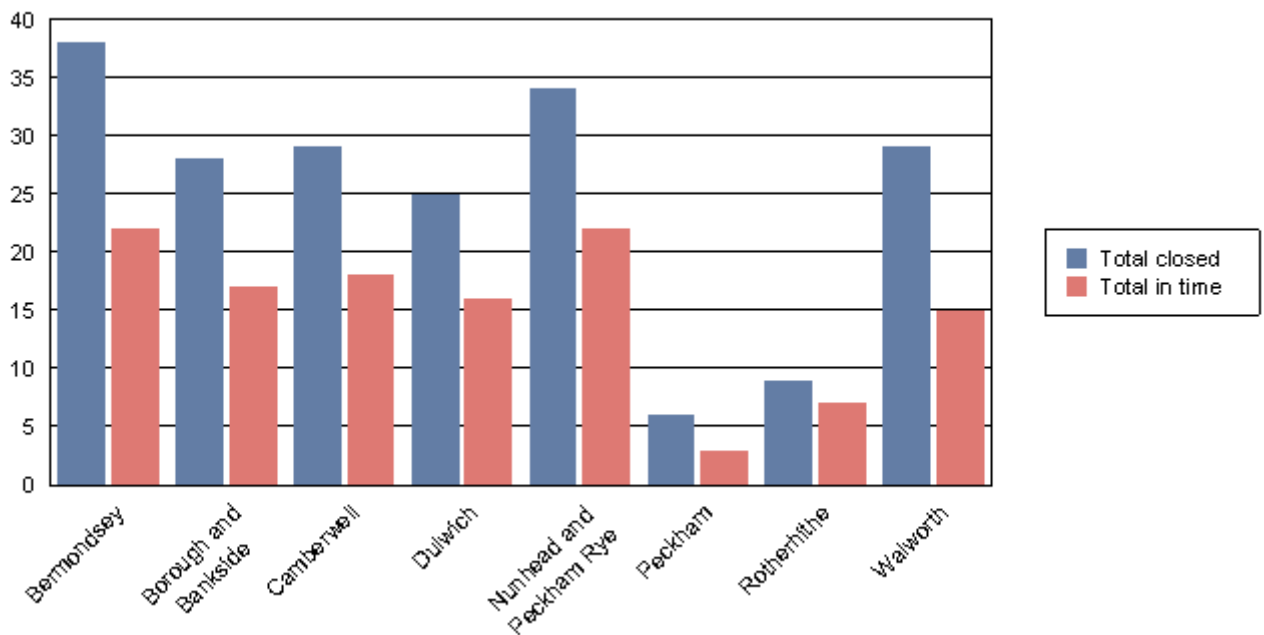
Percentages by Ward



APPENDIX 7

Enforcement investigations decided in the period 01/04/2011 to 31/08/2011

Community Council	Total	Total in target	% in target
Bermondsey	38	22	58
Borough and Bankside	28	17	61
Camberwell	29	18	62
Dulwich	25	16	64
Nunhead and Peckham Rye	34	22	65
Peckham	6	3	50
Rotherhithe	9	7	78
Walworth	29	15	52
Grand total	198	120	61



**MEMBERS & EXTERNAL DISTRIBUTION LIST MUNICIPAL YEAR 2011-2012
PECKHAM COMMUNITY COUNCIL**

Note: Original held by Constitutional Team (Community Councils)
(Tel: 020 7525 7385)

	Copies		Copies
To all members of the community council			
Councillor Cleo Soanes (Chair)	1	Audit Manager	1
Councillor Michael Situ (Vice-Chair)	1	Ground Floor	
Councillor Barrie Hargrove	1	160 Tooley Street	
Councillor Richard Livingstone	1		
Councillor Catherine McDonald	1		
Councillor Chris Brown	1		
Libraries (Newington)	1		
Local History Library	1		
Press			
Southwark News	1	Housing Offices	
South London Press	1	Peckham Area Housing Office	1
Peckham Newsletter	1	Raj Sarda	
African Voice	1	1 Housing Office 170 Sumner Road Peckham, SE15	
Members of Parliament			
Harriet Harman M.P.	1		
Simon Hughes M.P.	1		
Tessa Jowell M.P.	1		
		Total	67
Constitutional Officer (Community Councils) (at CLG, Tooley Street – Second Floor – Hub 4)	50		